



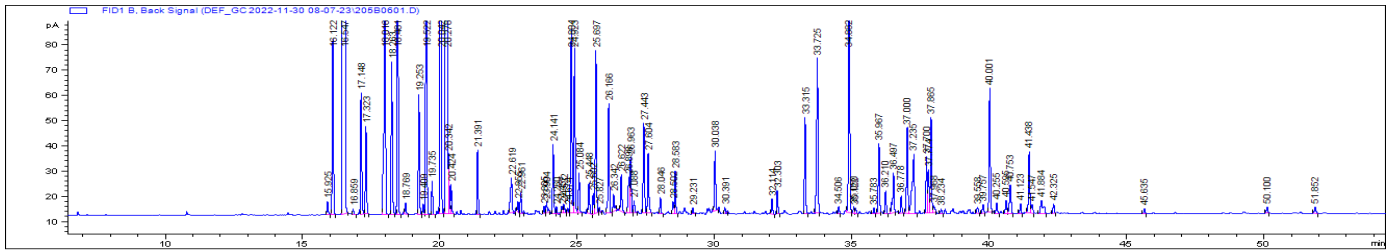
Scatters Oils (Pty) Ltd

Office 011 792 2902 | E-mail info@scattersoils.com | www.scattersoils.com  
147 Malibongwe Drive, Strijdom Park, Randburg, 2196

## GC ANALYSIS

|                    |                             |
|--------------------|-----------------------------|
| PRODUCT NAME       | FRANKINCENSE ESSENTIAL OIL  |
| LATIN NAME         | <i>Boswellia Carterii</i>   |
| CAS NO             | 8050-07-5                   |
| PRODUCT CODE       | PCFRABC01                   |
| EXPIRY DATE        | 11/2027                     |
| BATCH NUMBER       | FRAC1122BT                  |
| COUNTRY OF ORIGIN  | SOMALILAND                  |
| PART OF PLANT USED | RESINS (STEAM DISTILLATION) |

| ANALYTICAL DETAILS      | SPECIFICATIONS                    | RESULTS  |
|-------------------------|-----------------------------------|----------|
| COLOUR                  | CLEAR PALE YELLOW TO GOLDEN BROWN | COMPLIES |
| ODOUR                   | BALSAMIC AROMA                    | COMPLIES |
| PHYSICAL STATE          | LIQUID OIL                        | COMPLIES |
| REFRACTIVE INDEX (20°C) | 1.465 - 1.482                     | 1.4761   |
| RELATIVE DENSITY (20°C) | 0.860 - 0.896                     | 0.8780   |
| OPTICAL ROTATION        | -15° - +35°                       | -1.85°   |



| MAJOR CONSTITUENT LISTING |                     | RESULTS         |
|---------------------------|---------------------|-----------------|
| RETENTION TIME (MIN)      | NAME OF CONSTITUENT | COMPOSITION (%) |
| 15.925                    | 4-THUJANOL          | 0.108           |
| 16.122                    | ALPHA THUJENE       | 1.423           |
| 16.547                    | ALPHA PINENE        | 37.898          |
| 17.148                    | CAMPHENE            | 0.980           |
| 18.016                    | SABINENE            | 3.231           |
| 18.263                    | BETA PINENE         | 1.253           |
| 18.481                    | MYRCENE             | 2.628           |
| 19.253                    | ALPHA PHELLANDRENE  | 0.921           |
| 19.522                    | CYCLOFENCHENE       | 3.358           |
| 19.735                    | ALPHA TERPINENE     | 0.255           |
| 20.042                    | PARA CYMENE         | 3.649           |
| 20.278                    | LIMONENE            | 18.056          |
| 20.342                    | BETA PHELLANDRENE   | 0.352           |
| 20.424                    | 1.8 CINEOLE         | 0.238           |
| 21.391                    | GAMMA TERPINENE     | 0.490           |
| 22.619                    | TERPINOLENE         | 0.405           |
| 22.961                    | LINALOOL            | 0.156           |
| 24.804                    | PINOCARVEOL         | 1.663           |
| 24.923                    | TRANS VERBENOL      | 1.368           |
| 26.898+26.963             | OCTYL ACETATE       | 0.828           |
| 34.882                    | BETA CARYOPHYLLENE  | 2.117           |
| 40.001                    | VIRIDIFLOROL        | 1.020           |

This information is believed to be current and accurate but is provided without any warranty expressed or implied. Customers are advised to determine in advance the safe conditions for use of this product.

Pure Essential Oils | Carrier oils | Butters | Fragrances | Absolutes | Hydrosols

FDA APPROVED

ORGANICALLY CERTIFIED