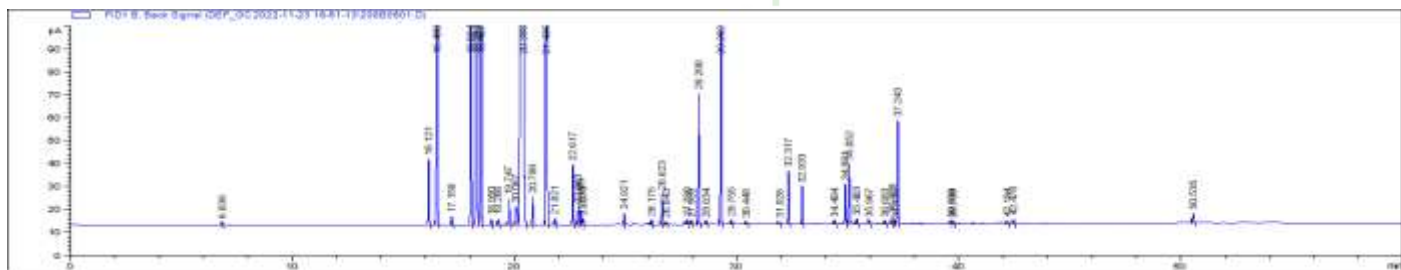


GC ANALYSIS

PRODUCT NAME	LEMON ESSENTIAL OIL
LATIN NAME	<i>Citrus Limonum</i>
CAS NO	84929-31-7
PRODUCT CODE	PTLEMBL01
BATCH NUMBER	LEM250322MAG81238
EXPIRY DATE	03/2024
COUNTRY OF ORIGIN	SOUTH AFRICA
PART OF PLANT USED	PEEL (COLD PRESSED)
ORIGINAL DATE ISSUED	07/12/2022
DATE OF DISPATCH	07/12/2022

ANALYTICAL DETAILS	SPECIFICATIONS	RESULTS
COLOUR	CLEAR PALE YELLOW TO GREENISH	COMPLIES
ODOUR	SWEET CITRUS AROMA	COMPLIES
PHYSICAL STATE	LIQUID OIL	COMPLIES
REFRACTIVE INDEX (20°C)	1.4730 - 1.4760	1.4742
RELATIVE DENSITY (20°C)	0.850 - 0.858	0.8511
OPTICAL ROTATION (20°C)	+57° - +70°	+64.99°



MAJOR CHEMICAL CONSTITUENTS		RESULTS
RETENTION TIME (MIN)	CHEMICAL NAME	COMPOSITION (%)
16.121	ALPHA THUJENE	0.390
16.490	ALPHA PINENE	1.792
17.158	SABINENE	1.965
18.024	BETA PINENE	11.232
18.294	MYRCENE	1.533
20.067	PARACYMENE	0.183
20.398	LIMONENE	69.046
21.435	GAMMA TERPINENE	8.212
22.617	TERPINOLENE	0.348
26.623	ALPHA TERPINEOL	0.190
28.280	NERAL	0.756
29.282	GERANIAL	1.229
32.317	NERYL ACETATE	0.302
32.933	GERANYL ACETATE	0.221
34.881	BETA CARYOPHYLLENE	0.265
35.052	TRANS ALPHA BERGAMOTENE	0.358
37.243	BETA BISABOLENE	0.660

This information is believed to be current and accurate but is provided without any warranty expressed or implied. Customers are advised to determine in advance the safe conditions for use of this product.

Pure Essential Oils | Carrier oils | Butters | Fragrances | Absolutes | Hydrosols